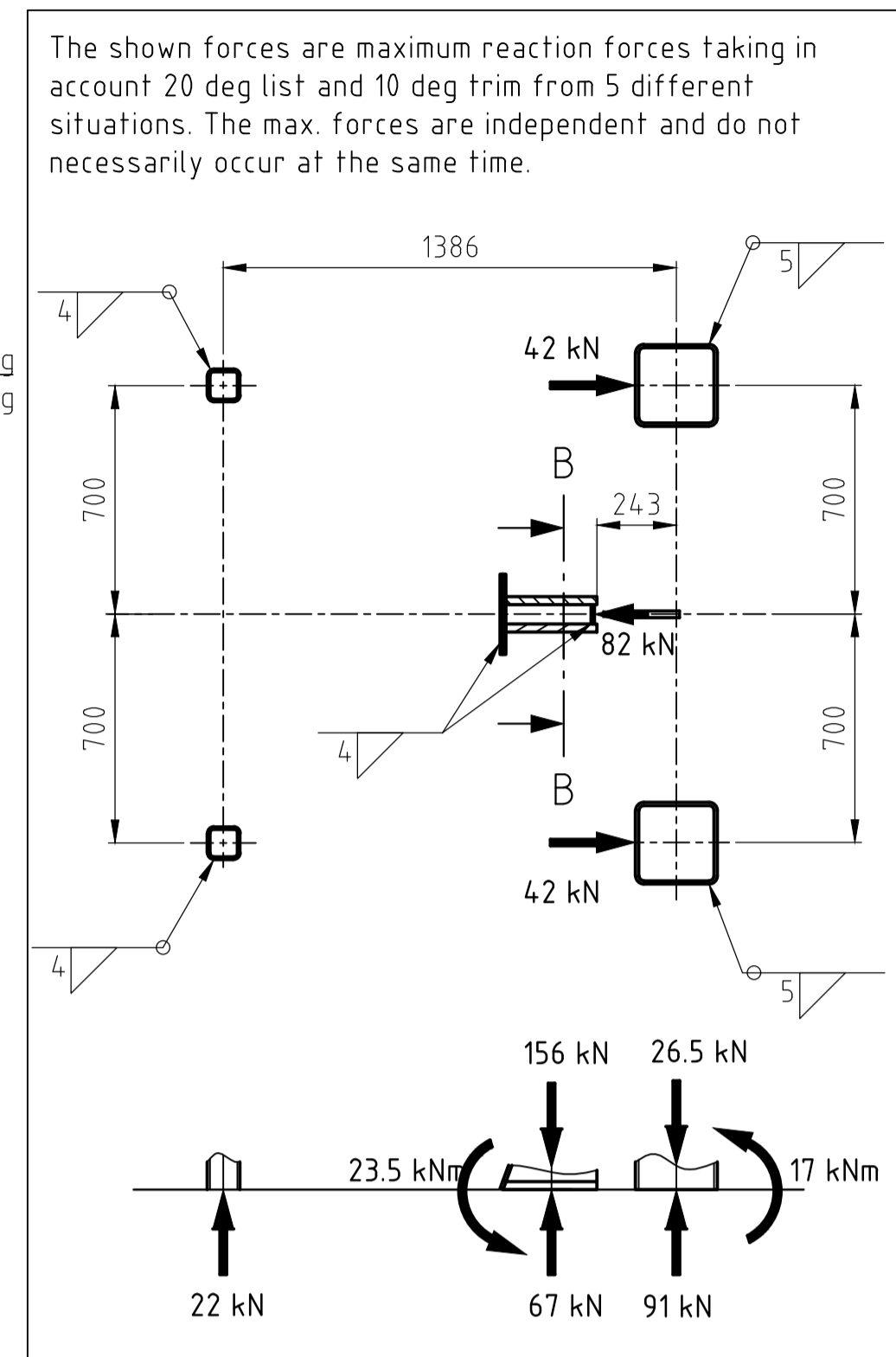
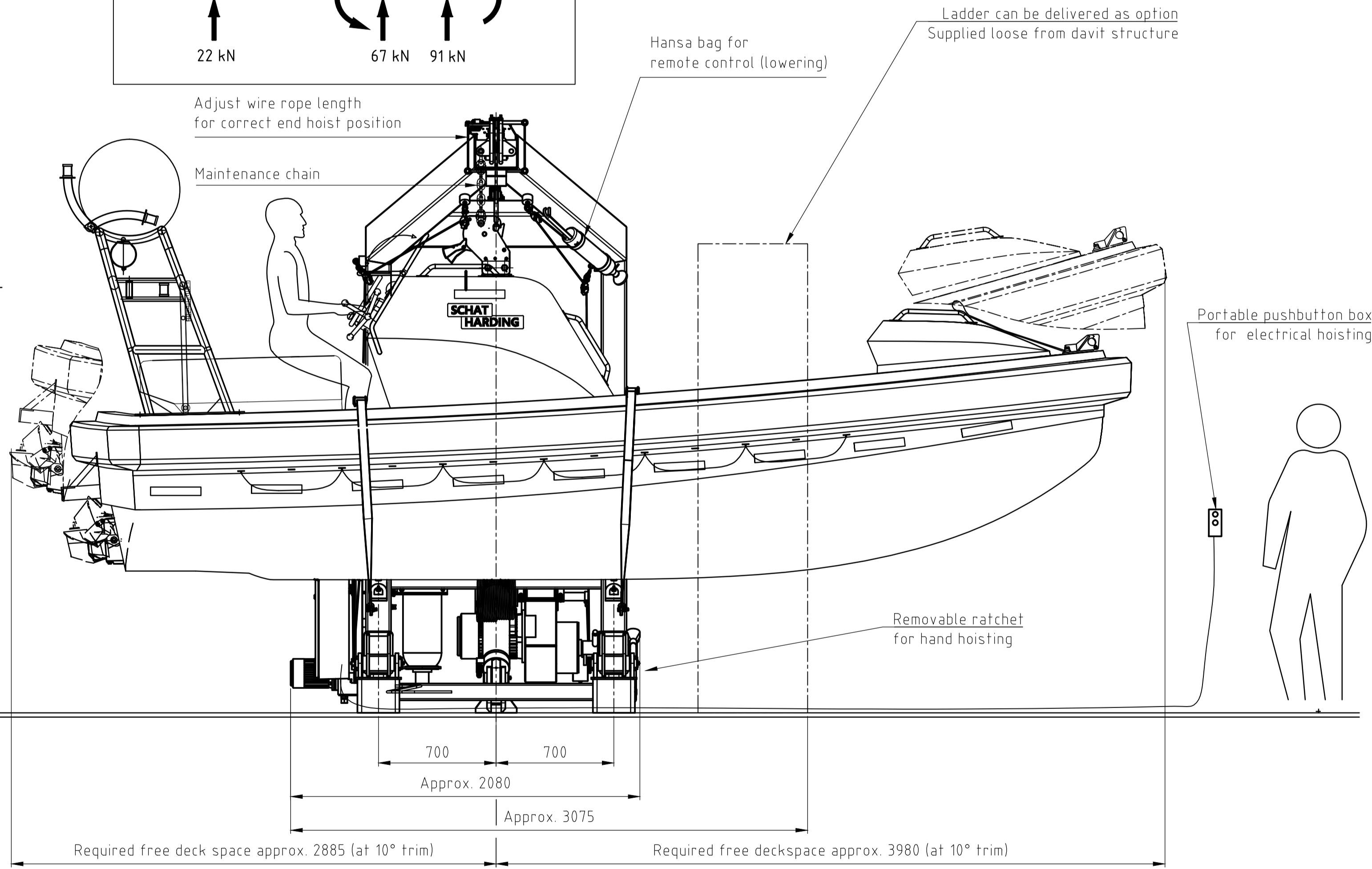
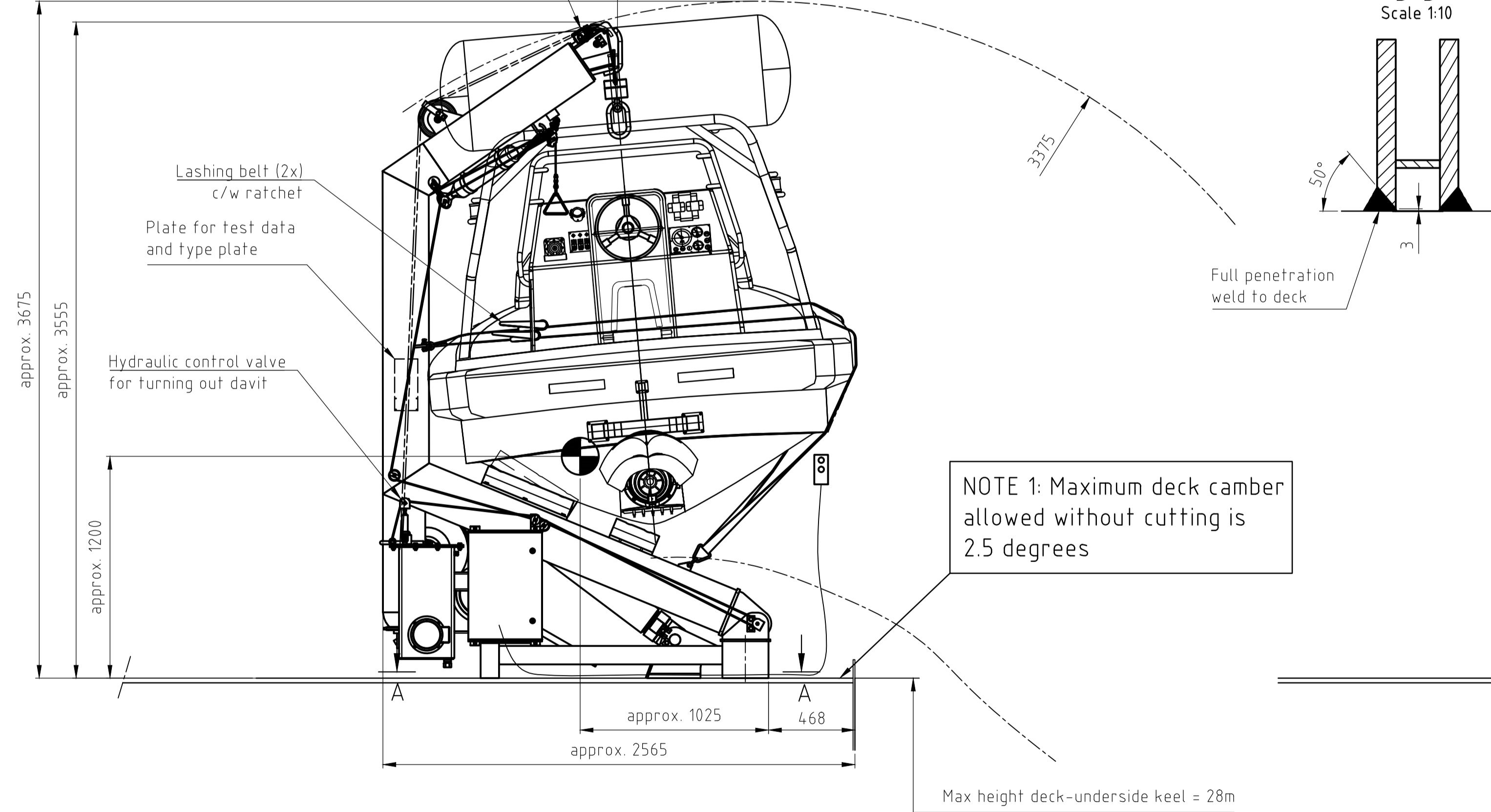
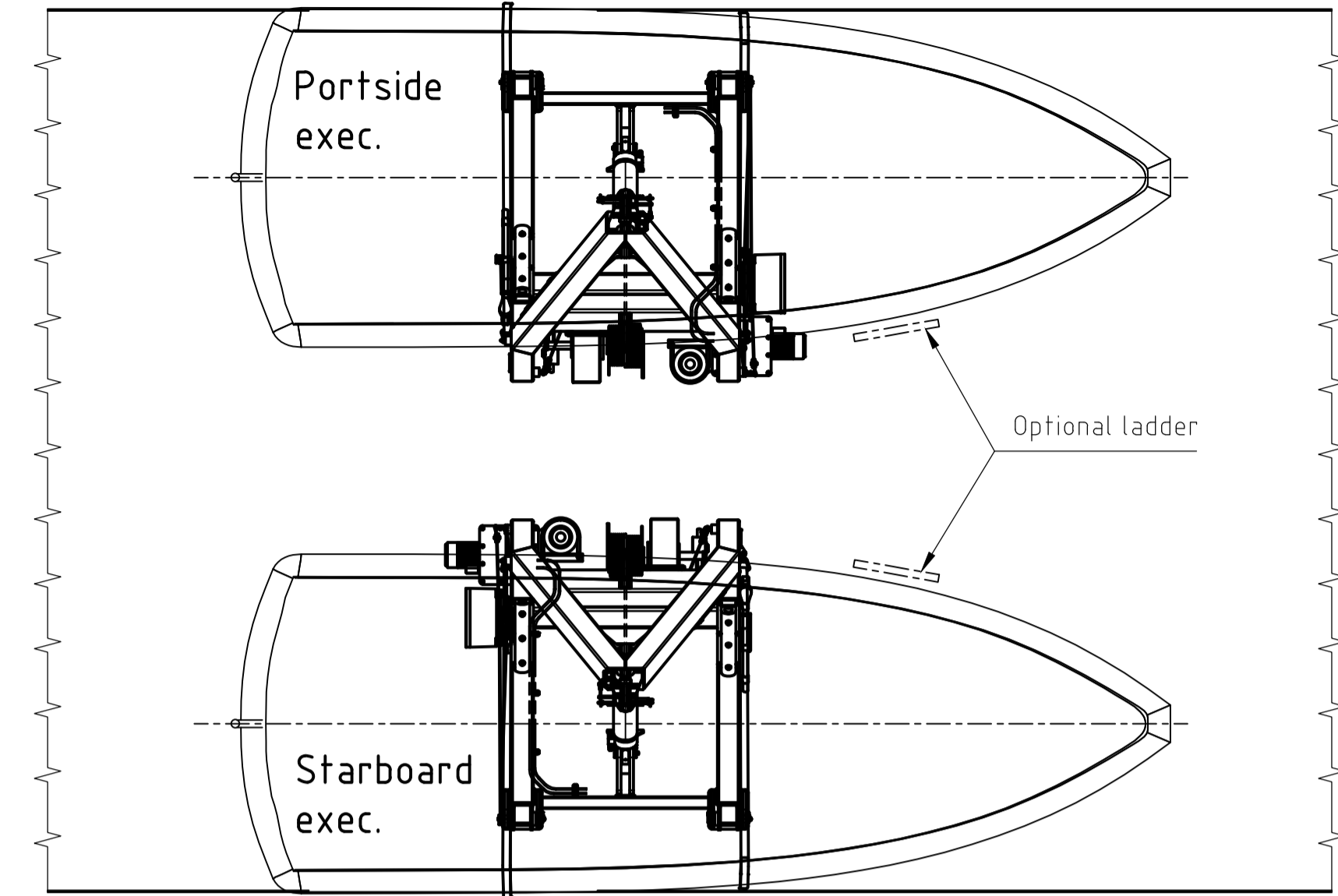


FOOT PRINT SECTION A-A
with reaction forces



Topview (deckplacing)
Scale 1:40



DAVIT MAIN DATA:
 PROTOTYPE APPROVED LOAD: 22 kN
 APPROX. TOTAL WEIGHT OF ONE SET OF DAVITS c/w WINCH AND POWER PACK (EXCLUSIVE LIFEBOAT and OIL): 1650 kg
 TRANSPORT DIMENSIONS: (loa x boa x h) 3750 x 2100 x 2080 mm
TEST INFORMATION:
 FACTORY STATIC TEST LOAD: 2.2 x 22 kN = 48.4 kN
 NOTE: ROTATIONAL FORCE ON WINCH DRUM IS NOT ALLOWED, THE BRAKE MAY NOT HOLD.
 ONBOARD DYNAMIC TEST LOAD: 1.1 x 22 kN = 24.2 kN
 NOTE: USE WATERBAGS OR WEIGHTS

WINCH MAIN DATA:
 TYPE: FME 3.3
 SAVE WORKING MOMENT (SWM): 3.3 kNm
 HOISTING SPEED (50-60 Hz): 18,0-21.6 m/min
 LOWERING SPEED: depending on lowering height
 max 60 m/min
 MAX. LOWERING HEIGHT: 28 m
ELECTRIC MOTOR DATA POWER PACK:
 POWER: 10 kW (HOIST)
 POWER: 1.75 kW (CHARGING ACCUMULATOR)
 VOLT./FREQ: 3 X 440V - 60Hz

LIFEBOAT SPECIFICATION:
 MAKER: UMOE Schat-Harding
 TYPE: Stinger 630 DJ
 WEIGHT OF BOAT WITH EQUIPMENT: (WE) 1650 kg
 WEIGHT OF PERSONS: (6) 495 kg
 TOTAL LOWERING WEIGHT: (WF) 2145 kg
 MAX. HOISTING WEIGHT: (WU) 2145 kg
 MAIN DIMENSIONS (loa x boa x h) 6730 x 2300 x 2101 mm (h= to center of hook)

NOTE 2: THE SHOWN GRAVITY POINTS REPRESENT THE COMBINED WEIGHT OF THE DAVIT AND BOAT INCL PERSONS WITH SHIP IN UPRIGHT POSITION

SCHAT HARDING		umoe	Surface	Scale 1:20	Position -	Quantity -
		© schat-harding				
		Drawn 03-02-10	Name HAS	Arrangement RD 630		
		Checked		With Stinger 630 DJ		
E	6743	03-12-10	HAS	Standard		
C	6737	26-02-10	HAS			
B	6735	15-02-10	HAS			
A	6734	08-02-10	HAS			
State/	Changes	Date	Name	Filename	hd1742oe	Replacng: -
				Page -	Pg	
				D-1742-0 /E		
				Transp. from: -		